

Having collected this species over a period of several years, we agree with Carleton et al. (1982) that *P. simulus* is a mouse of the lowland tropical forest in the Upper Arid Tropical Zone. The species appears to be most abundant in coastal wetland and mangrove swamp habitats and in mesic, riparian situations along the streamsidess which traverse arroyos in the coastal regions of central and southern Sinaloa and along the entire coast of Nayarit. The species appears to be absent from the drier hillsides which extend above the streamsidess along the coast. Populations of *simulus* penetrate

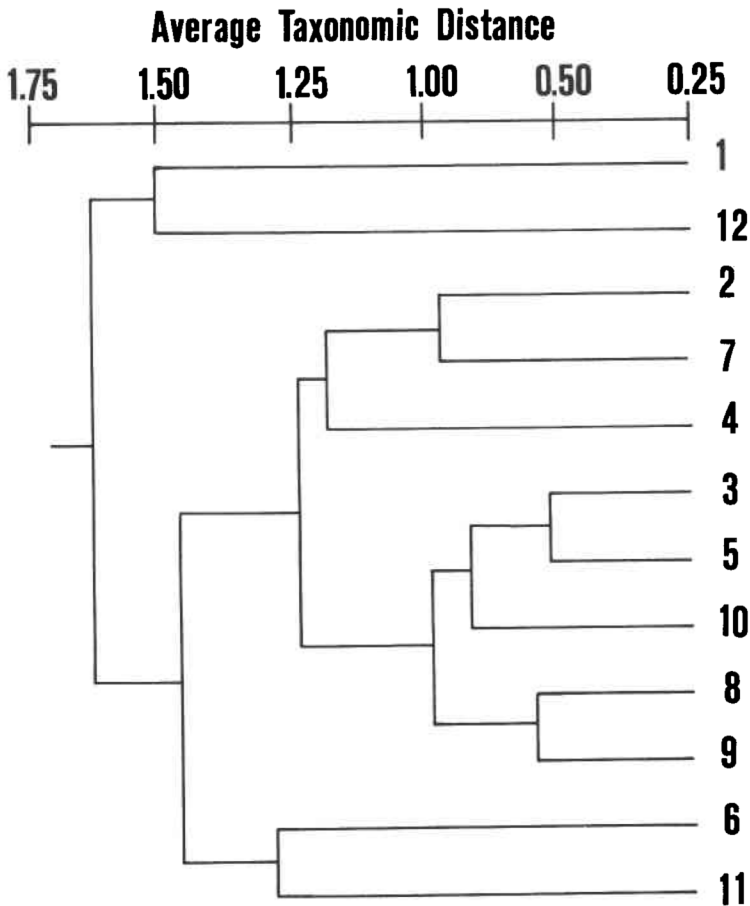


Figure 3.- Cluster analysis (UPGMA) of 12 samples of *Peromyscus* generated from the average taxonomic distance matrix using all 23 characters. Coefficient of cophenetic correlation = 0.79. Identification of sample numbers as in Fig. 1 and Appendix.